



New

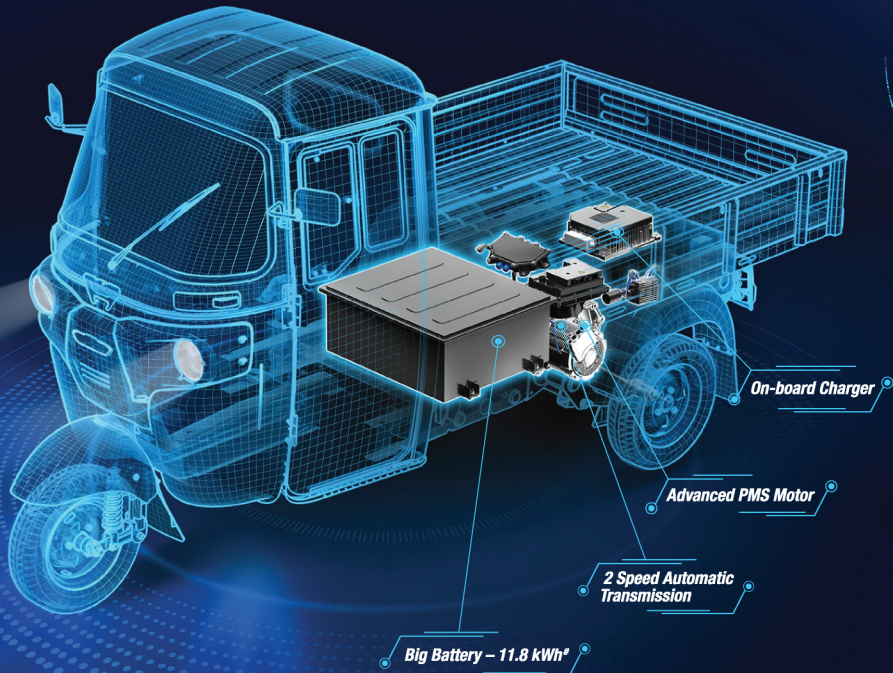
BAJAJ Maxima XL Cargo E-TEC 12.0



THE WORLD'S FAVOURITE INDIAN

TECHNOLOGY NAYI | BHAROSA WAHI

**BEST IN CLASS
5 YEARS
OR
1.2L km
STANDARD
WARRANTY***



183 km[#] range on single charge

Better 29% Gradeability

Strong Chassis

75 Lakh^{##} satisfied customers

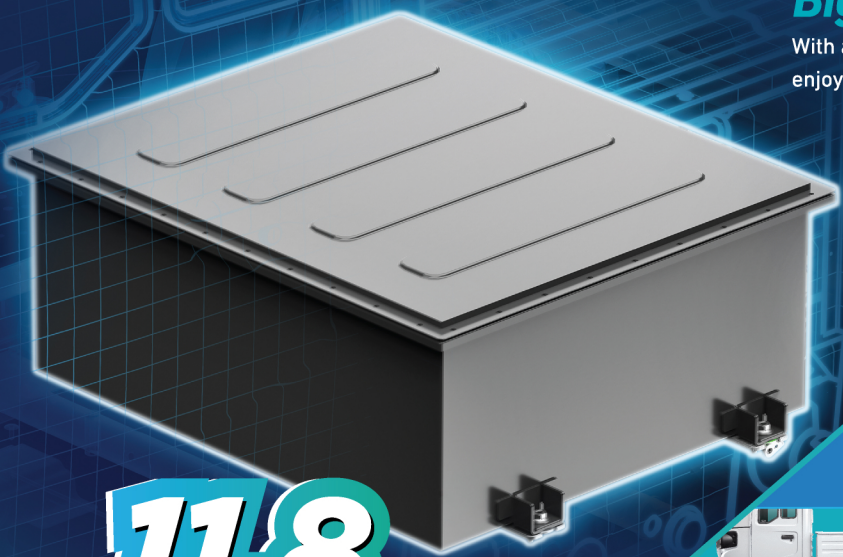
24/7 Roadside Assistance **1800-210-0981**

*Terms & conditions apply. *As per ARAI certificate. ^{##}75 lakh represent the total number of BAJAJ three-wheeler customers.

Big Battery

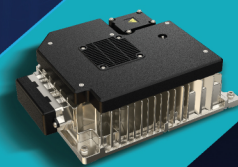
With a big battery of 11.8 kWh, enjoy a long range of 183* km.

11.8 kWh



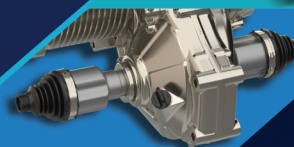
On-board Charger

Now charge anytime, anywhere, without the inconvenience of carrying a heavy charger.



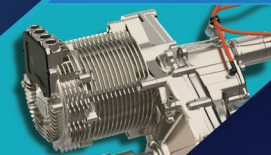
2 Speed Automatic Transmission

Enjoy extra miles, extra earnings, and better gradeability on every road.



Advanced PMS Motor

Experience a highly efficient motor that minimises energy loss and maximises the overall range and gradeability.



Big Tubeless Radial Tyre

Experience a more comfortable driving experience and hassle-free repair.



Longest Wheelbase

Get better stability with a higher volume and multiple applications.



Drive Shaft

CV shaft which reduces maintenance and enhance durability



Specifications

Performance

Top Speed	40 km/h - (Eco 30 km/h, Power - 40 km/h)
-----------	--

Battery

Type	Li-ion - LFP
Battery Capacity (kWh)	11.8 kWh
IP67 Packaging	Yes

Charger

Charging socket grid side	3 Pin 16 Amp
Charging time (Hrs.)	5 hrs 50 minutes <4 Hrs- 80%
Cable	RCD cable protects from voltage fluctuation

Dimension

Wheelbase (mm)	2274
Ground Clearance (mm)	180
Tray size (mm)	1840 X 1425 X 275

Drivetrain - Electric Motor & Transmission

Power (kW)	5.5 kW (Continuous)
Torque (Nm)	36 Nm
Gradeability	29% Max, 20% Continuous
Automatic 2 Speed Transmission	2 Speed AMT
IP67 Packaging	Yes

Suspension

Front	Twin shock absorber with spring
Rear	Independent trailing arm with Helical spring

Tyre

Type & size	Radial tubeless - 130/80 R12
-------------	------------------------------

Braking system

Regenerative braking system with sensing mechanism	Yes
--	-----

Hill Hold Assist

Avoid roll back on slopes	Yes
---------------------------	-----

Best in Class Warranty

5 years / 120 000 km

Charging Network

With Mera BAJAJ App, access a widespread charging network at your fingertips.



*As per ARAI certificate.

24/7 Roadside Assistance

Call 1800-210-0981 for roadside assistance anytime, anywhere

Dealership Stamp